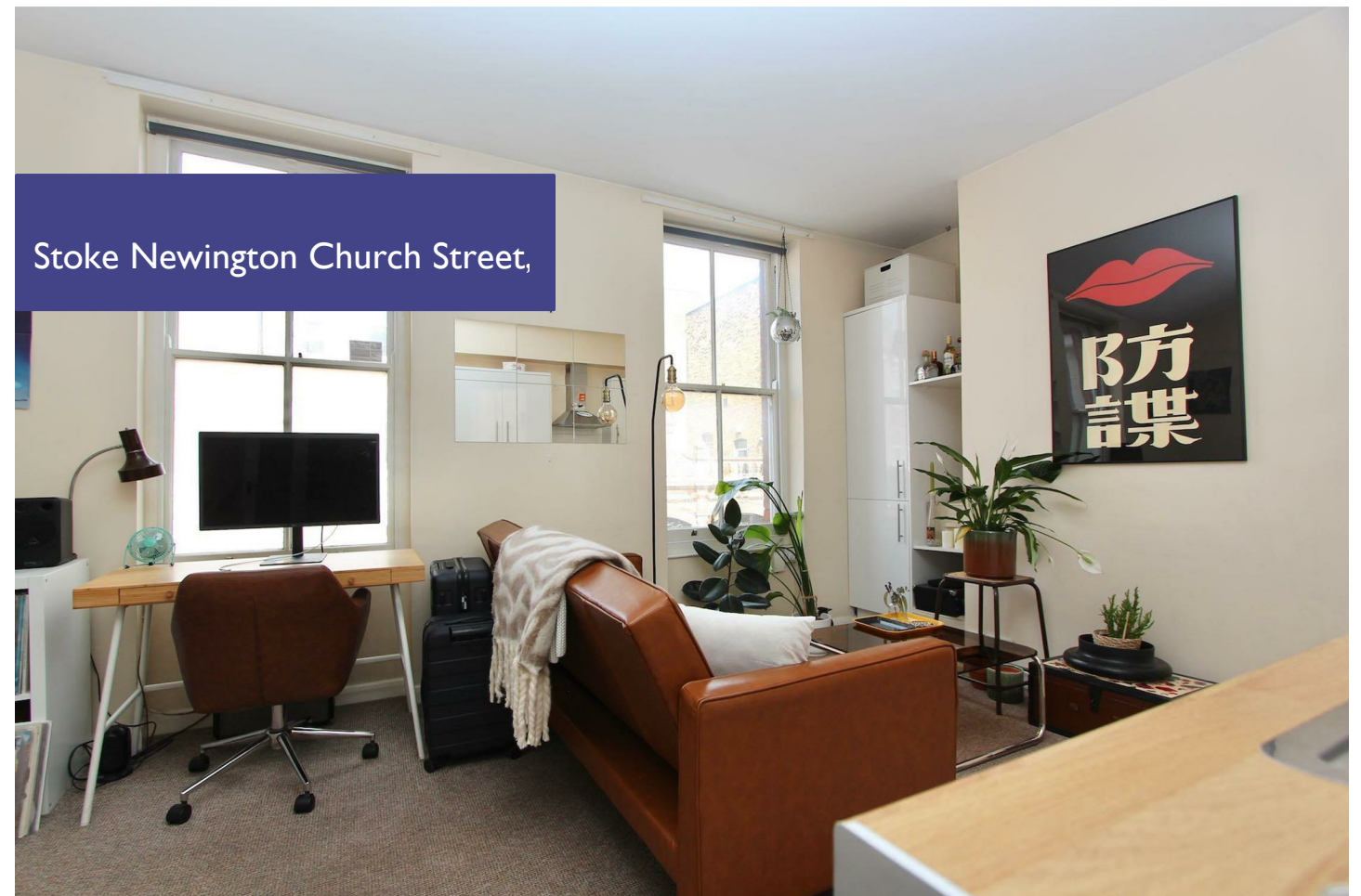


Total Area: 31.6 m² ... 340 ft²
 All measurements are approximate and for display purposes only



Energy Efficiency Rating		Current	Potential
Very energy efficient - lower running costs			
(92 plus) A			
(81-91) B			
(69-80) C			
(55-68) D		62	72
(39-54) E			
(21-38) F			
(1-20) G			
Not energy efficient - higher running costs			
England & Wales		EU Directive 2002/91/EC	

Contact Us:
 02072 490272

E-mail us:
sales@michaelnaik.com

Visit our website:
www.michaelnaik.com

Agents Note: Whilst every care has been taken to prepare these particulars, they are for guidance purposes only. All measurements are approximate and are for general guidance purposes only and whilst every care has been taken to ensure their accuracy, they should not be relied upon and potential buyers are advised to recheck the measurements.

£1,600 PER MONTH

- One Bedroom Flat
- First Floor
- 340 sq. ft
- In The Heart of Stoke Newington
- Available 1st-May
- Part-Furnished



About The Property...

This well positioned first floor flat is in the heart of vibrant Stoke Newington, and just short stroll from Stoke Newington's popular offering of independent restaurants and amenities in addition to Clissold Park, as well as offering an open plan kitchen/lounge benefitting from ceiling height sash style windows looking onto Church Street, followed by a shower room, and finally a bright bedroom.

Key Information

Available Mid-May

Part Furnished - (wardrobe and chest of drawers)

Reservation Deposit - £369 (forms part of security deposit)

Security Deposit - £1,845

Council Tax - Hackney - Band B

